



The Contractor's News Bulletin

Featured Vendors:

A 14 SEER tax credit solution?

YES!

(Actually, there are 21 solutions.)

Every 14 SEER[®] small pack is eligible.

That's right. Every model in our line of 14 SEER small package products is eligible for the U.S. tax credit made available by the **American Recovery and Reinvestment Act of 2009**. This product group includes 21 tax-credit-eligible models, including:

- Package Gas/Electrics
- Package Heat Pumps
- Package Air Conditioners

What about those 15 & 16 SEER minimum requirements?

Those minimums apply to split systems. Requirements are different for small packs.

- **Split-system heat pumps:** 15 SEER, 12.5 EER & 8.5 HSPF.
- **Split-system air conditioners:** 16 SEER and 13 EER.
- **Package products:** Small packs must achieve at least 14 SEER and 12 EER. Gas/electrics are eligible as package air conditioners on the basis of their cooling efficiency performance. Small pack heat pumps must achieve at least 14 SEER and 12 EER and 8.0 HSPF.

In addition, most of our other small package gas/electric and dual fuel models are eligible for a partial tax credit under the law's advanced main air circulating fan provision.



See manufacturer's certificates for qualifying products. Consult IRS guidelines for details.



BIG NEWS!

- **NEED A PLACE TO DISPOSE OF YOUR UNWANTED or USED EQUIPMENT?**

We are now offering a recycling service for you.

Please ask for details!

- **REFRIGERANT RECLAIM SERVICE NOW AVAILABLE**

You are able to dispose of your unused Refrigerant in all of our locations

- **ARE YOU SELLING MINI SPLITS?**

We have products that make you more money and qualify for the Stimulus Tax Credit!!



Our extensive range of residential and light commercial fans offer the ideal solution for air movement in any domestic application or office environment. Many products are available in stock with standard or next day delivery options.

Soler & Palau USA manufactures a complete line of gravity ventilators and fans for all your ventilation requirements.



MODEL DB
Backward Inclined
Belt Drive
Centrifugal Roof Exhaust



MODEL RED
Backward Inclined
Direct Drive
Centrifugal Roof Exhaust



MODEL SQB/SQD
Backward Inclined
Belt Drive/Direct Drive
Square Inline



MODEL UBB/UBX/UBS
Propeller
Belt and Direct Drive
Upblast Roof Exhaust



MODEL L
Propeller
Belt Drive
Sidewall Exhaust or Supply



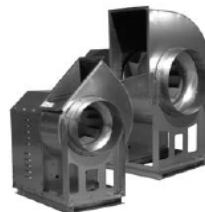
MODEL BGH
Gravity Hood
Intake or Relief



MODEL KSF
Forward Curved Blower
Belt Drive
Filtered Roof Supply



MODEL TXB/TXD
Backward Inclined
Belt Drive/Direct Drive
Centrifugal Upblast



MODEL BVS
Backward Inclined
Belt Drive
Centrifugal Utility Set

The World's Leading Producer of
Air Movement Products

Energy Incentives

Tax Credits

On Tuesday, February 17, 2009, President Obama signed into law H.R. 1, the American Recovery and Reinvestment Act of 2009 (version 8). To learn more log onto www.hardinet.org.

DSIRE

Have you ever wondered where to go to get information for the many incentives that are offered for buying energy efficient products?

DSIRE is a comprehensive source of information on state, local, utility, and federal incentives that promote renewable energy and energy efficiency. <http://www.dsireusa.org/>

AHRI

AHRI provides information on HVACR equipment and components to help you do your job, as well as resources to strengthen your education and training. The website provides an up-to-date listing of equipment eligible for the tax credit.

www.ahridirectory.org

Be Sure To Visit Your Local Coastline Location For All Your HVAC Equipment, Parts and Supply Needs!

www.coastlinedistribution.com